

McCoy Miller

Mini Rescue

AMBULANCES AND RESCUE VEHICLES



Driven for Quality and Value

Supported by an Experienced Nationwide Dealer Network



**McCoy
Miller**
LEASE
PLUS++++

800-326-2062



•••••••••• Mini Rescue - Standard Features ••••••••••

CHASSIS FEATURES

- Ford F-350 Cab/Chassis 6.0L diesel, 12,500# GVWR. 161" W.B. or F450 Cab/Chassis 6.0L diesel, 15,000# GVWR. 161" W.B.
- Dual Rear Wheel
- MIRRORS: Ford OEM
- WHEEL COVERS: Stainless steel wheel inserts



BODY FEATURES

- All ALuminum Welded Body: 146" body; 2" x 2" tubular structure on 12" centers for strength and durability
- BODY GUSSETS: All corners and stress Points
- REAR BUMPER: Aluminum w/flip-up center section to facilitate loading
- .125 BODY SIDESKIN: For added strength and a smooth unbroken finish
- ADJUSTABLE SHELVES: (5) Diamond plate with 2" Lips
- ROLL OUT TRAY: (1) In rear compartment, 40" x 76" on HD roll-out slides, tray rating is 1,000#
- MULTIPLE STORAGE AREAS: Access to (9) exterior compartments including (2) transverse in front, (2) wheel well, (2) rear side, (1) rear access with roll out tray

WARNING LIGHTS & SIREN FEATURES

- FLASHER: Whelen AF6016A solid state
- INTERSECTION LIGHTS: (2) Whelen 700 Series
- GRILLE LIGHTS: (2) Whelen 700 Series
- WARNING LIGHTS: (2) Whelen 900 Series on upper rear corners
- LOAD LIGHTS: Optional
- SCENE LIGHTS: Optional
- SIREN: Whelen WS-295HSF2
- SPEAKERS: (2) CPI with 100w drivers
- BACK-UP ALARM: 97 Db with momentary cutoff

INTERIOR FEATURES

- SPOTLIGHT: (1) 400,000CP hand-held light w/momentary switch, hard wired to OEM dash

DOOR FEATURES

- LATCHES: TriMark automotive style on side compartment doors
- HD - EXTRUDED DOOR JAMS: Key locked and welded for improved fit
- HD - Extruded Door Frames: .125 Pan formed skin for enhanced strength and improved finish
- DOOR LINERS: Attached with 10-24 stainless steel screws and rivnuts for service accessibility
- INTEGRATED DOOR SEAL: Reduces wear on seal and eliminates outer contamination of doors, compartments and modules
- IMPROVED DESIGN: Reduced welding, heat distortion and body fill to enhance the overall appearance of the ambulance



POWER DISTRIBUTION / ELECTRICAL FEATURES

- ETCHED-TRACE POWER CIRCUITS: HD-3 oz. for increased service life
- ETCHED-TRACE CONTROL CIRCUITS: HD-3 oz. for dependable service
- MARINE GRADE HIGH CURRENT SWITCHES: Replaceable, for milliamp circuit, to improve switching dependability

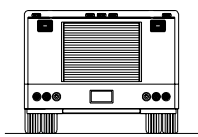
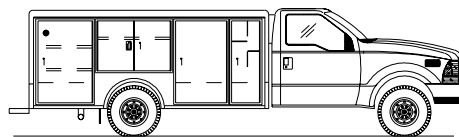


- LED DIAGNOSTIC CONTROL AND DOOR OPEN CIRCUITS: To facilitate troubleshooting
- DOOR OPEN CIRCUITS: Magnetic/LED diagnostic circuit to reduce current drain
- HD MACHINE CRIMPED HARNESS: Pull and load tested, prewired for halogen, LED, or strobe lighting systems provides a rugged dependable network
- INVERTER: Prewired for Vanner inverter

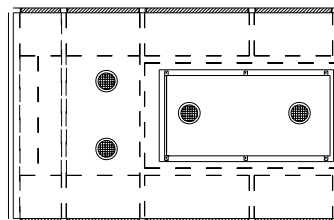
WARRANTY

- 4 YEAR/48,000 MILE CONVERSION WARRANTY
- 15 YEAR STRUCTURAL WARRANTY
- 6 YEAR 72,000 MILE ELECTRICAL WARRANTY
- 7 YEAR PAINT WARRANTY - PPG DELFLEET PAINT PRODUCT SYSTEM

Standard Exterior



Standard Exterior



Standard Interior Floorplan

McCoy Miller

1110 D. I. Drive
Elkhart, IN 46514
Phone: 574-264-7511
FAX: 574-262-9236
visit our website:
www.mccoymiller.com



For more information contact your
McCoy Miller dealer:

Due to constant product improvements; specifications, component parts and optional equipment are subject to change without notice or obligation. Photos may show optional equipment.